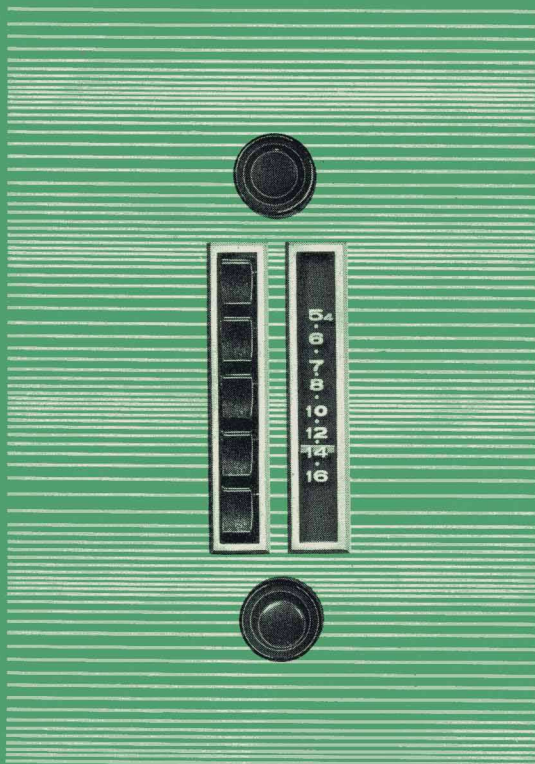

D A T S U N

GENUINE CAR RADIO

TOSHIBA MODEL 7CN-15T



 NISSAN MOTOR CO., LTD.

 TOKYO SHIBAURA ELECTRIC CO., LTD.

HOW TO OPERATE

5

By this knob, you can select a station manually.

4

Push one of the buttons to select your station.

1

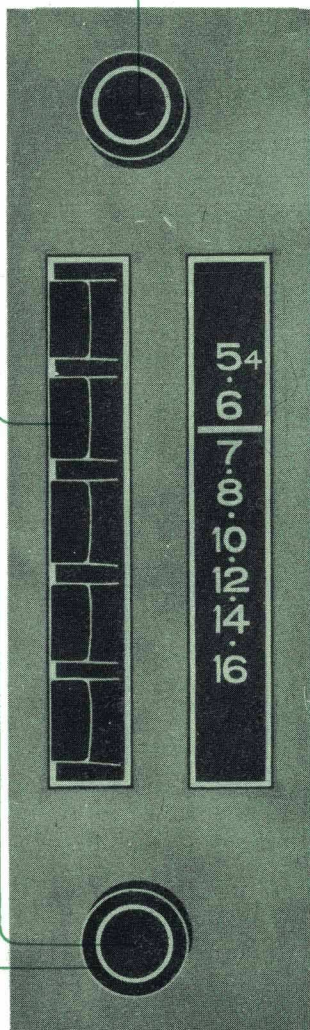
Push the inner knob to operate on. Push again the knob to cut off.

2

Turn clockwise the inner small knob to make louder.

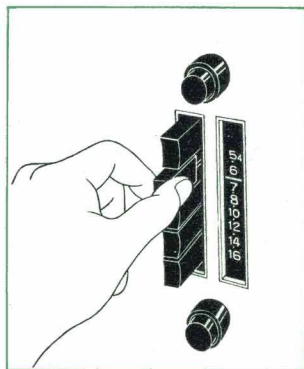
3

Turn clockwise the outer large knob to make the voice clear, or to pull the music in full range. To make the music soft, turn it counter-clockwise.

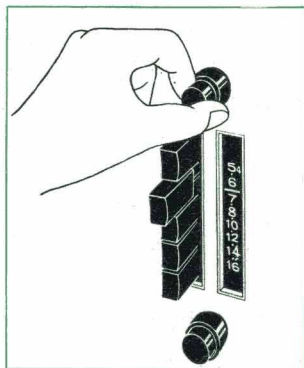


HOW TO SET PUSHBUTTONS

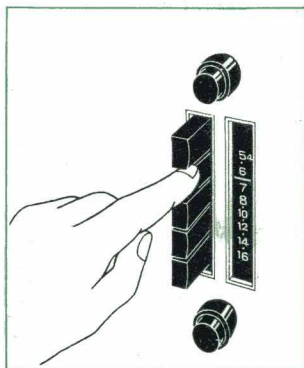
- 1** Pull out the pushbutton to be set.



- 2** Carefully tune-in the desired station with the manual tuning knob.



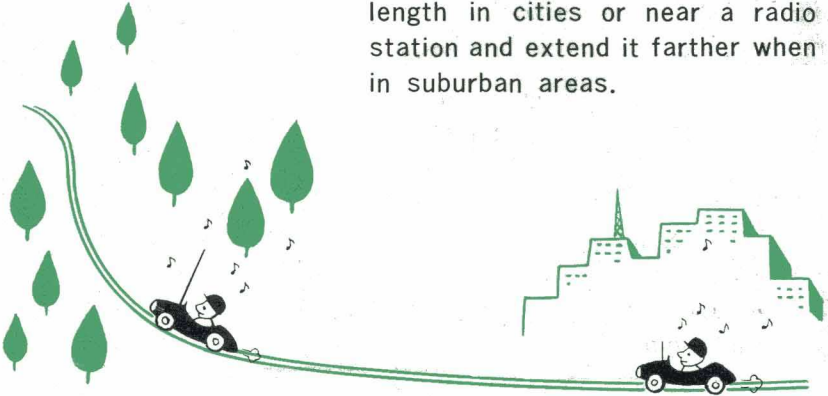
- 3** Push firmly the button in, to lock this button to the tuned-in station.



Follow the above procedure for the remaining buttons.

PRECAUTIONS

- * Match the length of the antenna to the strength of the signal for better reception. Use a shorter length in cities or near a radio station and extend it farther when in suburban areas.



- * When a car is parked in the burning sun for a long time. The temperature inside the car rises considerably.

Under this condition drive the car for a while before operating on the radio.



- * Car-wash

When the radio itself or the speaker gets wet, trouble may result.



PRECAUTIONS

***When fuse is blown**

Check the fuse if turning on of the power switch does not bring in a station or the dial lamp does not light. Replace fuse with the spare.

***How to adjust the antenna trimmer**

After the radio is fixed onto the car body and connected to the car antenna, adjust the antenna trimmer in the radio as follows.

1. Extend the car antenna by a section or tow.
2. Tune exactly on a weak signal station around 1400 KC.
3. Adjust the antenna trimmer screw on the bottom of the radio to get maximum output.

SPECIFICATIONS OF MODEL 7CN-15T

Frequency Range	530 ~ 1605 kHz (KC)
Intermediate Frequency	455 kHz (KC)
Power Source	12volts DC Negative Ground
Output Power	5watts (max.)
Loudspeaker	6 1/2 " (160mm) PMD Type
Controls	5 Push Buttons Manual Tuning On off & Volume Tone
Circuit	7 Transistor & 2 Diodes



TOSHIBA CAR RADIO MODEL 7CN-15T SCHEMATIC DIAGRAM

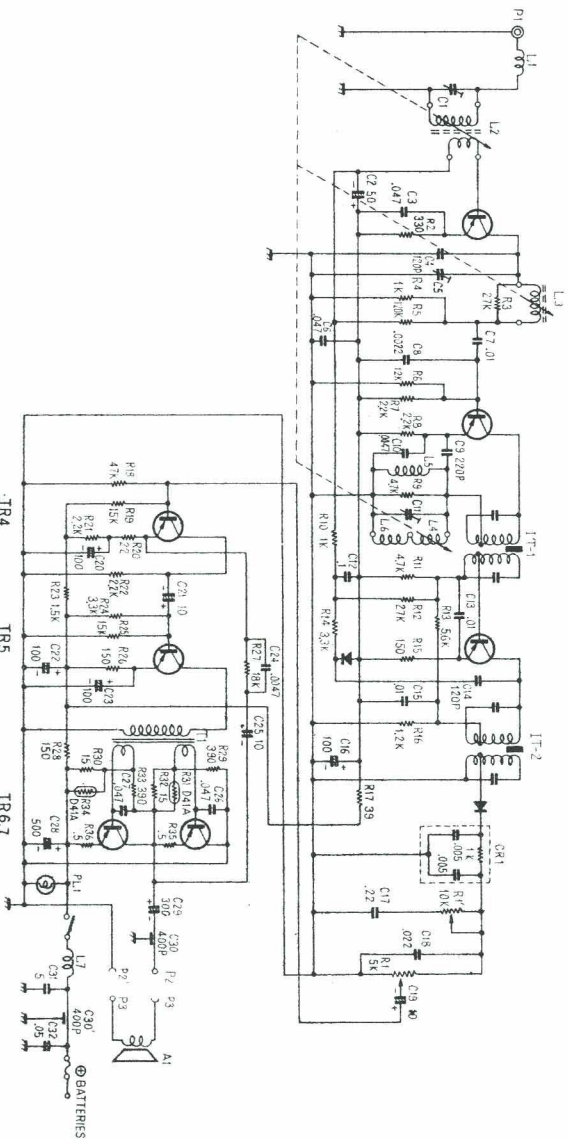
TR1
2SA472

TR2
2SA472

TR3
2SA472

D1
1N60

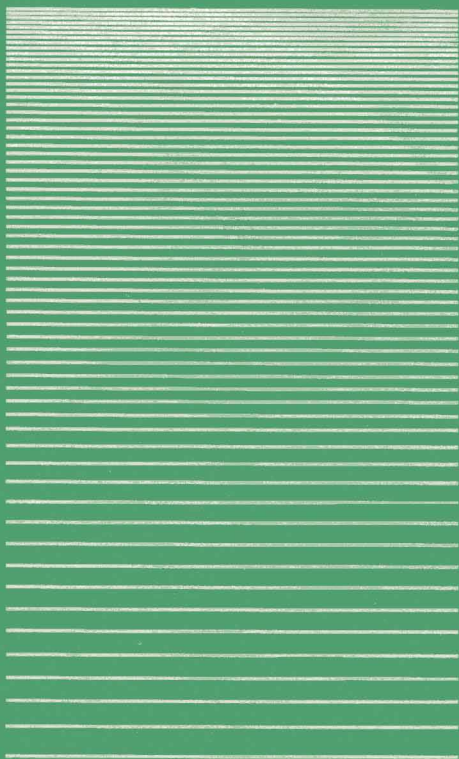
D2
1N60



TR4
2SB54

TR5
2SB56

TR6 7
2SB463



 NISSAN MOTOR CO., LTD.

 TOKYO SHIBAURA ELECTRIC CO., LTD.